

Traffic Management

A Traffic Management Plan for the Moorabool Wind Farm has been developed to ensure the efficient and safe movement of traffic to and from the site during the construction period.

Information on road use during construction is provided through:

- Moorabool Wind Farm website, www.mooraboolwindfarm.com
- Moorabool Wind Farm Traffic Website, www.mwftraffic.com
- Displays at prominent local locations, and
- SMS notifications.



Displays are available locally to illustrate maps of traffic movements, types of significant movements (e.g. oversized component deliveries), times and densities, to allow the local community to be informed of increased traffic movements on regularly used roads.

The SMS notification system allows interested members of the community can register to receive regular notifications about traffic movements and turbine deliveries. Text your name to [0418 975 014](tel:0418975014).

Routes to Site

Quarry Material/Aggregate

Material is sourced from a number of local quarries.

Concrete

Concrete for turbine foundations will be produced on site and also from off-site concrete plants. This allows dispersed road usage to reduce the degradation of local roads.

Oversize deliveries

The majority of components will depart the Port of Geelong and travel along the Western Highway to site. Some deliveries will be from the south via the Geelong Ballan Road. Some tower sections will be delivered from Portland, the Keppel Prince factory.

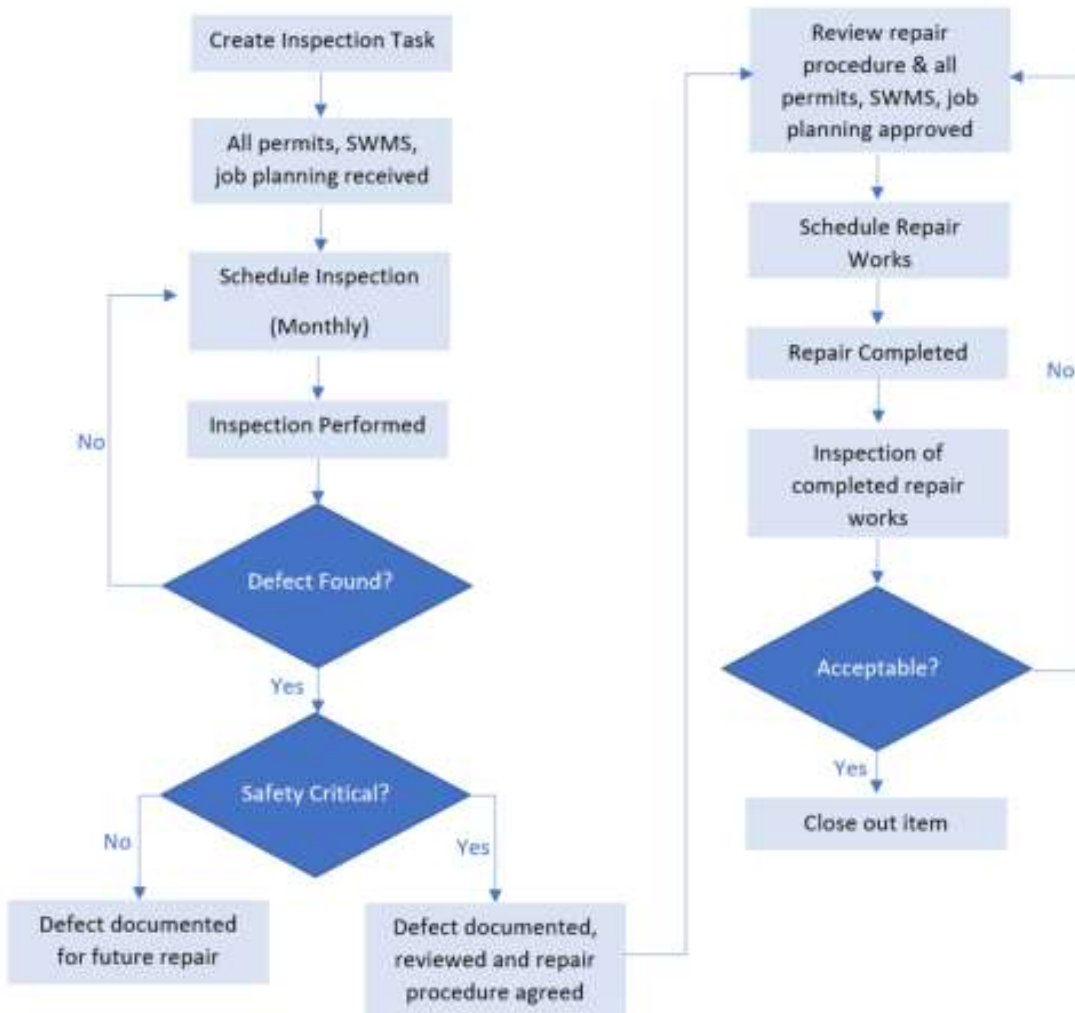
For further details on Oversize Deliveries please see the specific factsheet “**Over Dimensional Deliveries**”.

Public Road Repairs

Construction traffic will use the local road network. An existing condition survey has been undertaken to detail the current condition of the road network.

Any upgrades required to any public road during construction of Moorabool Wind Farm is expected to generally follow the process outlined below. This is in conjunction with Moorabool Shire Council and to ensure the safety of road users as a priority.

A post construction survey will also occur after the last turbine delivery has taken place.



T: 1800 019 660
E: info@mooraboolwindfarm.com
W: www.mooraboolwindfarm.com

