



## Traffic Management

A Traffic Management Plan for the Moorabool Wind Farm has been developed to ensure the efficient and safe movement of traffic to and from the site during the construction period.

Information on road use during construction will be provided through:

- Moorabool Wind Farm website,
- Displays at prominent local locations and
- SMS notifications

Once construction begins, the website will be updated weekly on construction activities and road use.

Displays will be available locally to illustrate maps of traffic movements, types of significant movements (e.g. oversized component deliveries), times and densities, to allow the local community to be informed of increased traffic movements on regularly used roads.

The SMS notification system will be advertised locally and interested members of the community can register to receive regular notifications about traffic movements and turbine deliveries.

A weekly SMS will be delivered to everyone who registers advising of main movements and directing them to the website for further details.

## Routes to Site

### Quarry Material/Aggregate

Material is likely to be sourced from a number of local quarries. The final sources and the route to Moorabool North and Moorabool South are still being considered. Further information will be available when this is finalised.

### Concrete

Concrete for turbine foundations will be produced on site and we are also investigating the feasibility of using off-site concrete plants. This may allow dispersed road usage to reduce the degradation of local roads. It would also provide a boost to local industry.

The final route to Moorabool North and Moorabool South are still being considered. Further information will be available when this is finalised.

## Oversize deliveries

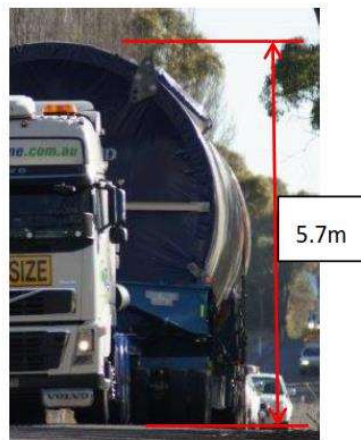
The majority of components will depart the Port of Melbourne and travel along the Western Highway to site.

- Depart the Port of Melbourne at night and travel along the Western Highway.
- Wait at truck stop on Western Hwy until morning before delivery to site.

Some deliveries will be from the south via the Geelong Ballan Road.

Some tower sections will be delivered from Portland, the Keppel Prince factory.

### Blade delivery for White Rock Wind Farm, NSW



Tower Section  
Delivery

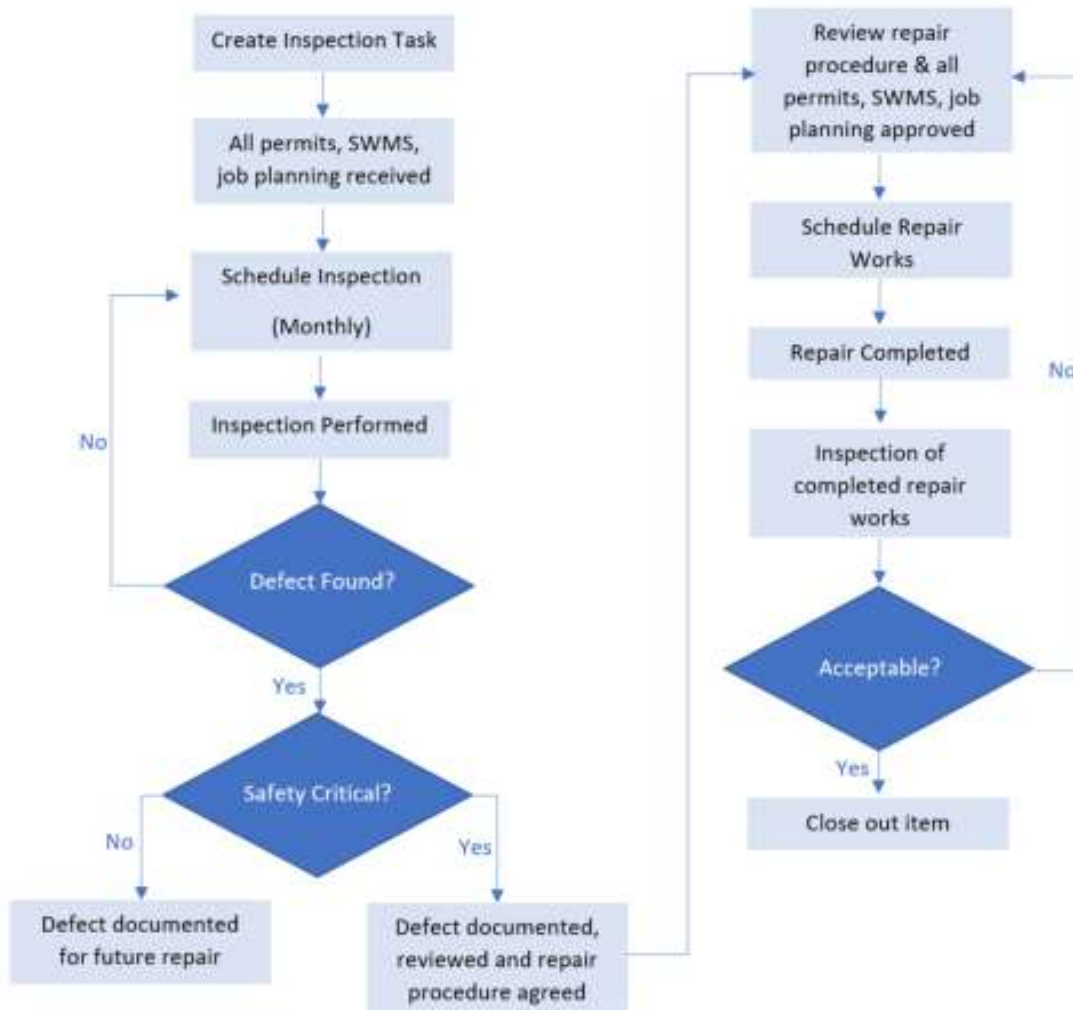
Figure 1 – Approximate maximum required trailer width and height dimensions (depending on turbine model and trailer type)

# Public Road Repairs

Construction traffic will use the local road network. An existing condition survey has been undertaken to detail the current condition of the road network.

Any upgrades required to any public road during construction of Moorabool Wind Farm is expected to generally follow the process outlined below. This is in conjunction with Moorabool Shire Council and to ensure the safety of road users as a priority.

A post construction survey will also occur after the last turbine delivery has taken place.



T: 1800 019 660

E: [info@mooraboolwindfarm.com](mailto:info@mooraboolwindfarm.com)

W: [www.mooraboolwindfarm.com](http://www.mooraboolwindfarm.com)