

# MOORABOOL Wind Farm

December 2017 Update

Moorabool Wind Farm comprises two sections; Moorabool North (Bungeeltap) and Moorabool South (Ballark).

A necessary step before construction can start is the submission of Development Plans and other pre-construction plans, to the Minister for Planning for approval. The Plans demonstrate how the project will comply with the conditions of the Moorabool Wind Farm Planning Permit, issued in October 2010.

## Moorabool North

Goldwind submitted these plans for Moorabool North in May 2017 and they have now been endorsed by the Minister for Planning. The Development Plans approved are for 41 of the 50 wind turbine positions with the remaining 9 to be approved in due course.

The plans propose the latest model turbine from Goldwind, the GW136 3.S and stand up to 171m to the tip of the blade. See Map 1.

**Moorabool North Wind Farm** will be constructed in a staged approach:

- Stage 1A –public road upgrades / construction compound
- Stage 1B – 41 turbines and associated infrastructure
- Stage 1C – remaining 9 wind turbines

**Zenviron** have been engaged to undertake the detailed design work for Moorabool North.

Further information on the sequence of construction and early activities will be made available prior to construction commencing.

For further information please contact:

- **Freecall:** 1800 019 660,
- **M:** 0472 832 552,
- **E:** [info@mooraboolwindfarm.com](mailto:info@mooraboolwindfarm.com),
- **Information Centre:** 152 Inglis Street, Ballan, Wednesday to Saturday 9am to 1pm,
- **Web:** [www.mooraboolwindfarm.com](http://www.mooraboolwindfarm.com)



## **Moorabool South**

**Moorabool South Wind Farm** development plans have now been submitted to the Minister for Planning for approval.

The Development Plans submitted are for 50 of the 57 wind turbine positions with the remaining 7 to be submitted in due course.

The plans propose the latest model turbine from Goldwind, the GW136 3.S and stand up to 171m to the tip of the blade. The turbine layout (map enclosed) is generally in accordance with the layout approved in the planning permit. Some minor changes to turbine locations (micro-siting) are proposed, for example to avoid cultural heritage on the site and to take advantage of minor technical improvements in the wind farm design. Some small changes to the internal road network are also proposed, for similar reasons. With these minor changes, the wind farm will be compliant with noise, shadow flicker and other permit conditions. See Map 2.

**Moorabool South Wind Farm** will be constructed in a staged approach:

- Stage 2A – public road upgrades and construction compound
- Stage 2B – 50 turbines and associated infrastructure
- Stage 2C – remaining 7 wind turbines

Further information on the sequence of construction and early activities will be made available prior to construction commencing.

## **Aviation Warning lights**

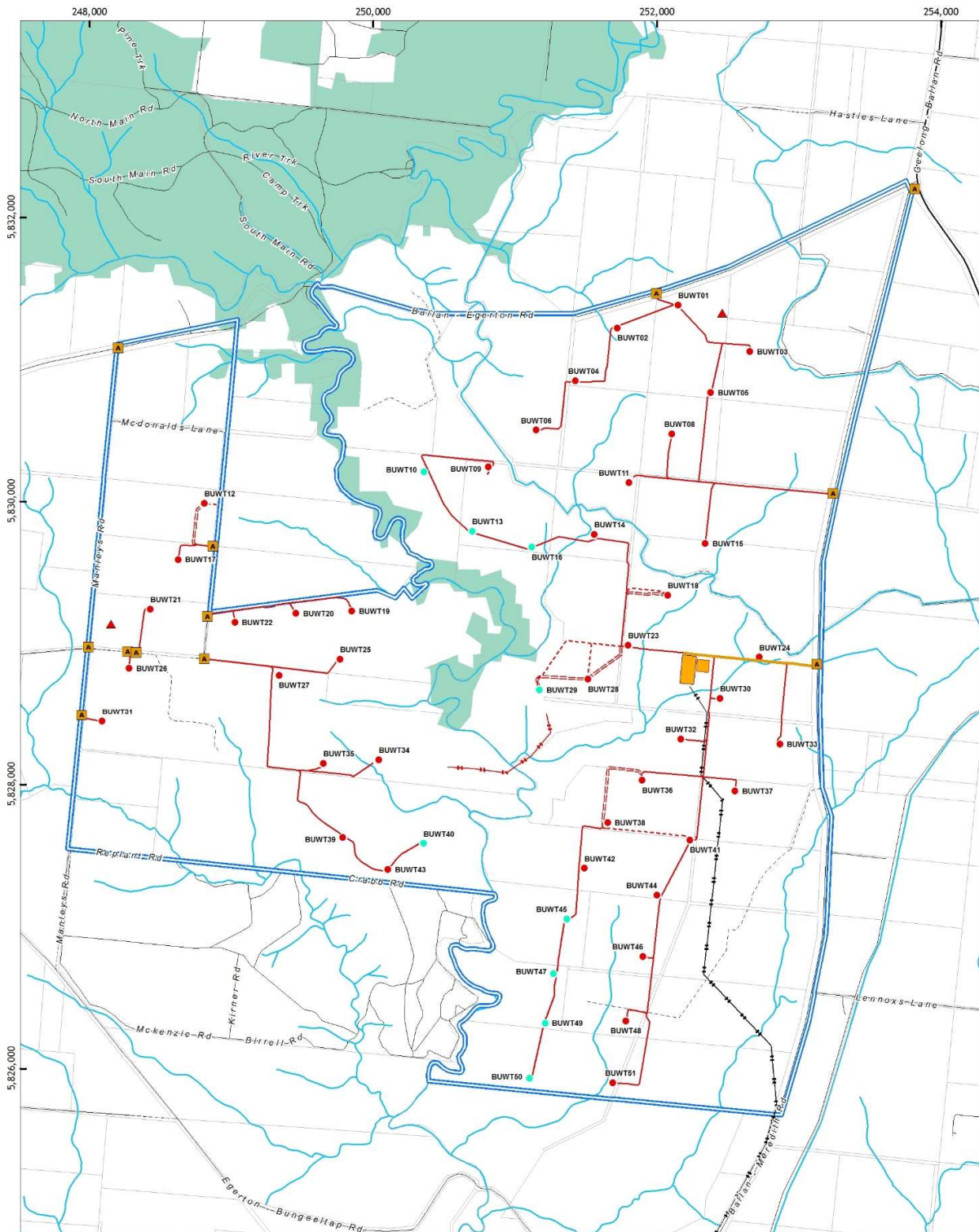
An aviation hazard assessment has been conducted and consultation with the relevant aviation regulatory bodies has taken place. The independent aviation hazard assessment has determined that lighting of turbines is not required.

This determination may be revised should a change in circumstance arise where aviation obstacle lights are required either as a result of a CASA requirement or as a result of an independent risk assessment demonstrating that operation of the wind farm without obstacle lighting creates an unacceptable public risk. Therefore, as a precautionary measure, aviation lights will be installed on 41 of the 107 of the wind turbines. The activation of aviation hazard lights is not proposed for Moorabool Wind Farm at this time.

For further information please contact:

- **Freecall:** 1800 019 660,
- **M:** 0472 832 552,
- **E:** [info@mooraboolwindfarm.com](mailto:info@mooraboolwindfarm.com),
- **Information Centre:** 152 Inglis Street, Ballan, Wednesday to Saturday 9am to 1pm,
- **Web:** [www.mooraboolwindfarm.com](http://www.mooraboolwindfarm.com)





**GOLDWIND**

**PROJECT MANAGEMENT**

Disclaimer:  
This plan was prepared for the purpose and exclusive use of Goldwind Australia. Goldwind Australia gives no warranty in relation to the data (including accuracy, reliability, completeness or suitability) and accepts no liability for any loss, damage or costs (including consequential damage) resulting to any use of the data in this map.

Coordinate System: ODA64 MGA55

- LEGEND**
- Wind Farm Boundary
  - 132kV Overhead Transmission Line
  - Stage 1A**
    - Temporary Construction Compound
    - Concrete Batching Plant
    - Access / Intersection Upgrade
    - Access Track
  - Stage 1B**
    - Monitoring Mask
    - Turbine
    - Access Track
    - Preferred Access Track
    - Alternative Access Track
    - 33kV Overhead Transmission Line (Location of Access Track to be)
  - Stage 1C (Future Stage)**
    - Turbine



**Moorabool Wind Farm**

**Moorabool North (Bungeeltap) Consultation Map**

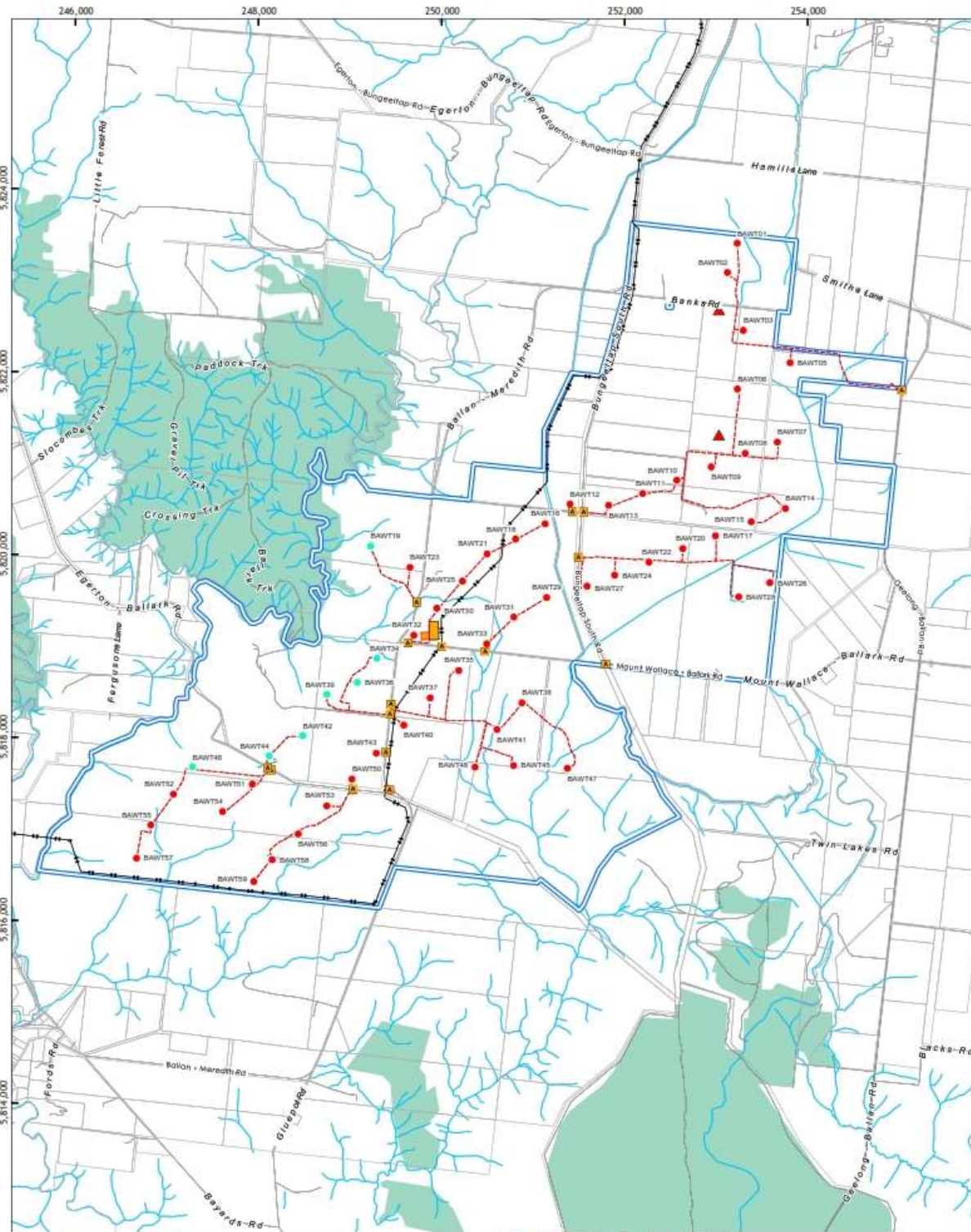
DATE: 19/10/2017  
SCALE: 1:25,000 @ A3  
STATUS: Draft

PRODUCED: A. Lo Cascio  
CHECKED: C. McAleoin  
APPROVED: H. Kennedy

0 500 1,000 Metres

DRAWING NO: MBWF\_OVR\_006\_NTH\_1A  
REV: 01A

Map 1 – Moorabool North



**GOLDWIND**

**PROJECT CONSULTANT**

Disclaimer: The user was prepared for the purposes and exclusive use of Coalbrook Australia. Coalbrook Australia gives no warranty in relation to the data (including accuracy, reliability, completeness or suitability) and accepts no liability for any loss, damage or costs (including consequential damages) resulting in any use of the data in this map.

Coordinate System: GDA94 MGA05

**Legend**

- Wind farm boundary
- 132kV overhead transmission line
- Stage 2A (Early Works)**
  - Access Point
  - Temporary Construction Compound
  - Concrete Batching Plant
- Stage 2B**
  - Monitoring Mast (Indicative Layout)
  - Access Track
- Future Stage**
  - Turbine
  - Turbine



**Moorabool Wind Farm**

**Moorabool South (Ballark) Consultation Map**

DATE: 5/12/2017	PROJECT: A LuCech
SCALE: 1:30,000 @ A3	DESIGNER: C McAvan
STATUS: Draft	APPROVED: P Kennedy

0 500 1,000 1,500 2,000 Metres

MBWF\_OVR\_005\_STH\_1D 01C

Map 2 – Moorabool South