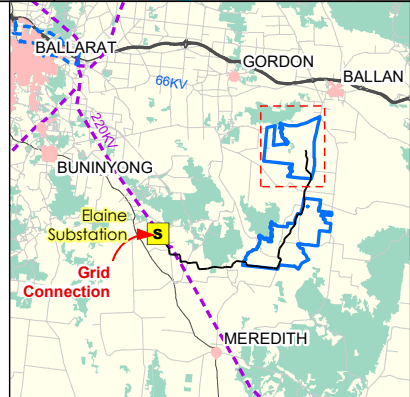


Disclaimer:
This plan was prepared for the purpose and exclusive use of Goldwind Australia. Goldwind Australia gives no warranty in relation to the data (including accuracy, reliability, completeness or suitability) and accepts no liability for any loss, damage or costs (including consequential damage) relating to any use of the data in this map.

Coordinate System: GDA94 MGA55

- LEGEND**
- Wind Farm Boundary
 - 132kV Overhead Transmission Line
 - Stage 1A**
 - Temporary Construction Compound
 - Concrete Batching Plant
 - Access / Intersection Upgrade
 - Access Track
 - Stage 1B**
 - Monitoring Mask
 - Turbine
 - Access Track
 - Preferred Access Track
 - Alternative Access Track
 - 33kV Overhead Transmission Line (Location of Access Track to be)
 - Stage 1C (Future Stage)**
 - Turbine



PROJECT		Moorabool Wind Farm	
TITLE		Moorabool North (Bungeeltap) Consultation Map	
DATE	19/10/2017	PRODUCED	A.LoCascio
SCALE	1:25,000 @ A3	CHECKED	C.McArlein
STATUS	Draft	APPROVED	H.Kennedy
0 500 1,000 Metres		N	
DRAWING No.	MBWF_OVR_006_NTH_1A	REV	01A