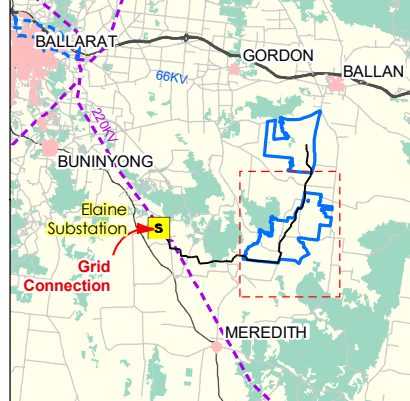


Disclaimer:
This plan was prepared for the purpose and exclusive use of Goldwind Australia. Goldwind Australia gives no warranty in relation to the data (including accuracy, reliability, completeness or suitability) and accepts no liability for any loss, damage or costs (including consequential damage) relating to any use of the data in this map.

Coordinate System: GDA94 MGA55

- LEGEND**
- Wind farm boundary
 - 132kV overhead transmission line
 - Stage 2A (Early Works)**
 - Access Point
 - Temporary Construction Compound
 - Concrete Batching Plant
 - Stage 2B**
 - Monitoring Mast (Indicative Layout)
 - Access Track
 - Turbine
 - Future Stage**
 - Turbine



PROJECT		Moorabool Wind Farm	
TITLE		Moorabool South (Ballark) Consultation Map	
DATE	5/12/2017	PRODUCED	A.LoCascio
SCALE	1:38,827 @ A3	CHECKED	C.McArlein
STATUS	Draft	APPROVED	H.Kennedy
DRAWING No.	MBWF_OVR_005_STH_1D	REV	01C